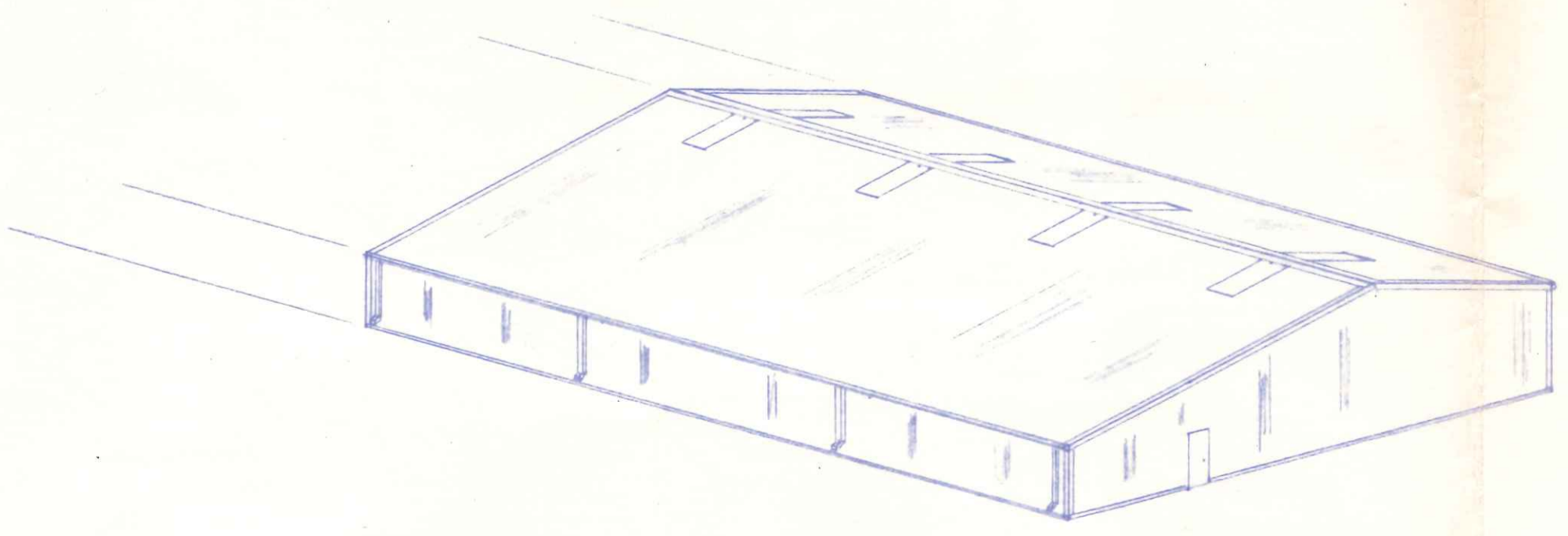


**NOTES:**

- 1.) DESIGN LOADING: 25 p.s.f. LIVE + 5 p.s.f. DEAD
- 2.) ROOFING: PLAIN ALUMINUM
- 3.) SIDING: GOLD ALUMINUM w/ WHITE TRIM
- 4.) SKYLITES: (8) 3'x8' (ROOF ONLY)
- 5.) GUTTER: 192' w/ 6 DOWNSPOTS
- 6.) STRESSES: TIMBERS  $F_b = 1250$  p.s.i.  
 $F_c = 725$  p.s.i.  
 SUPPORTS  $F_b = 1600$  p.s.i.  
 GIRTS & PURLINS  $F_b = 1100$  p.s.i.



1410 Scott St

CITY OF NAPoleon  
 BUILDING DEPT.  
 Plan Approval  
 By R.E.F. Date 10-12-78

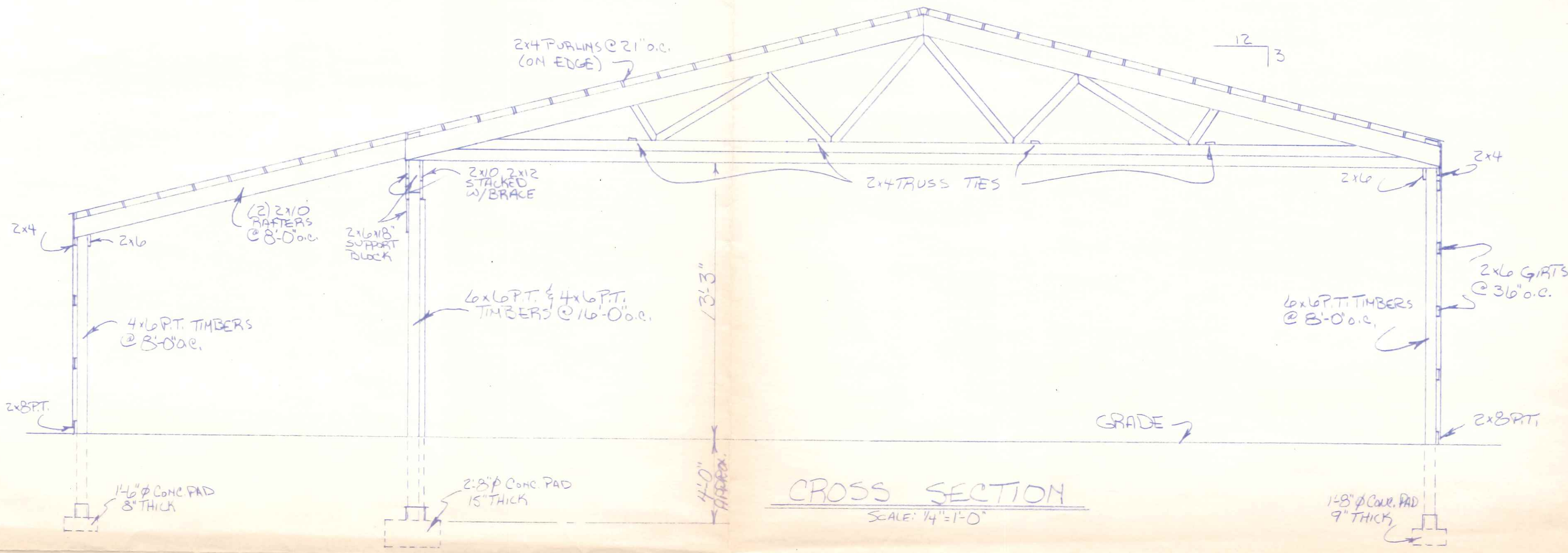


**W Wickes Buildings**  
 A DIVISION OF THE WICKES CORPORATION

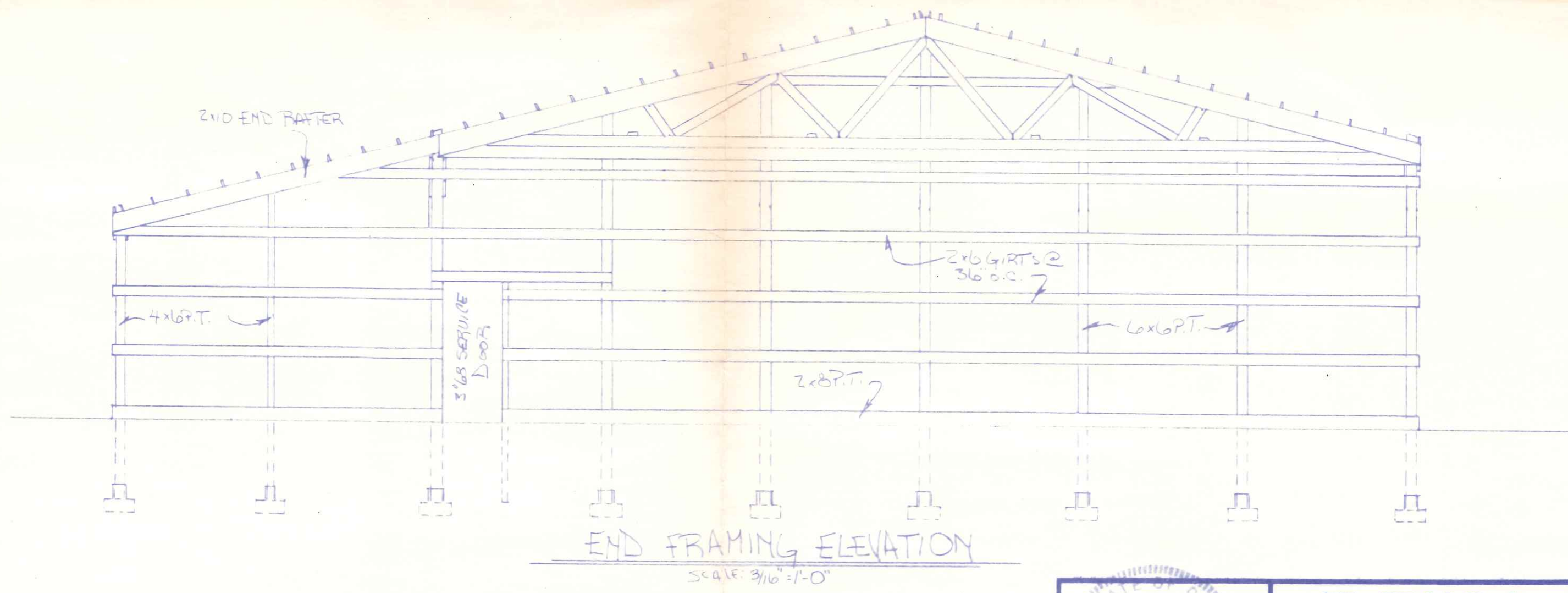
50'x16'x96' STORAGE  
 FOR MERLE FRANZ & JOHN GLICK  
 NAPoleon, OH 10

APPROVED BY: <i>[Signature]</i>	REVISIONS:	DRAWN BY: P.MILNER	JOB NO. 78282
DATE: 9-11-78	REVISIONS:	SCALE: AS NOTED	SHEET 1 OF 2





**CROSS SECTION**  
SCALE: 1/4" = 1'-0"



**END FRAMING ELEVATION**  
SCALE: 3/16" = 1'-0"



**W Wickes Buildings**  
A DIVISION OF THE WICKES CORPORATION

50' + 16' x 96' STORAGE  
FOR  
MERLE FRANZ & JOHN GLICK

APPROVED BY: <i>[Signature]</i>	REVISOR:	DRAWN BY: RON MILNER	JOB NO. 78282
DATE: 9-11-78	REVISOR:	SCALE: AS NOTED	SHEET 2 OF 2